

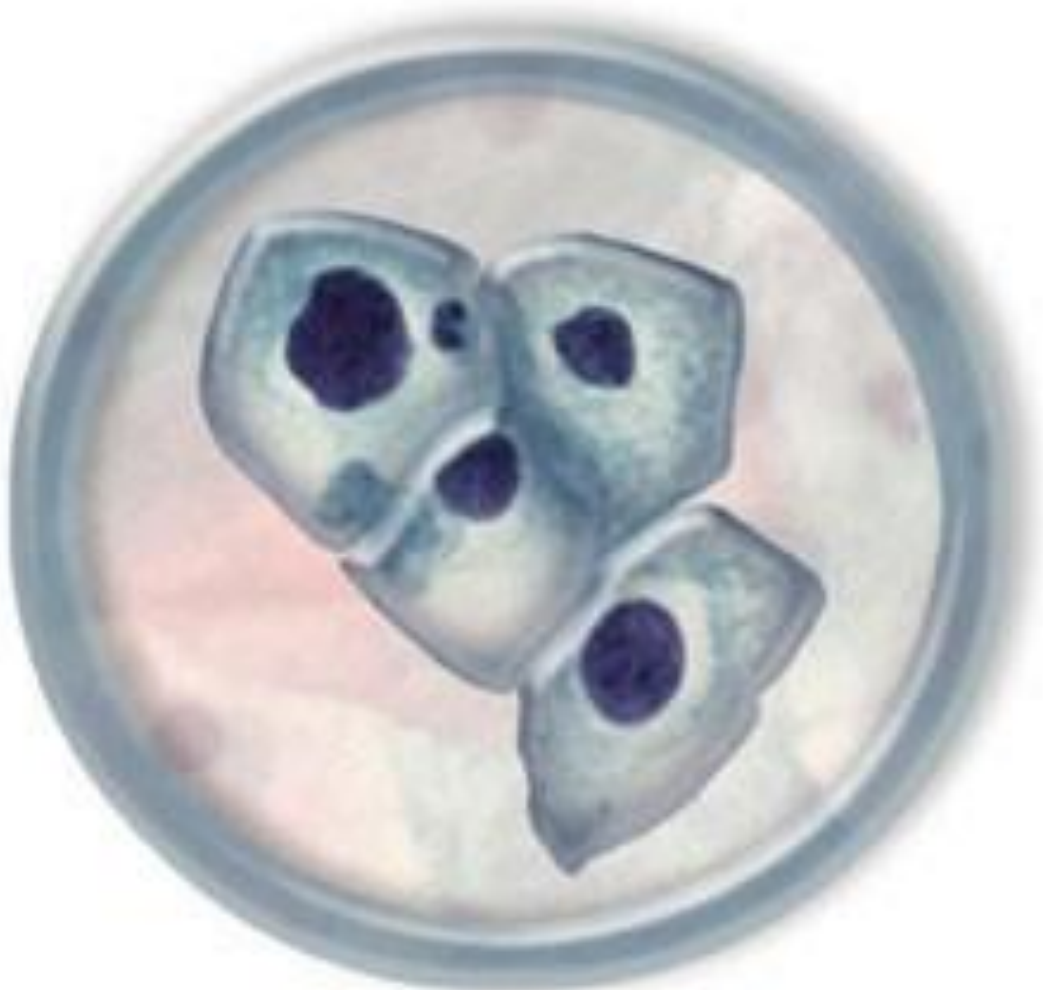
# **The London Regional Cytology Training Centre**

**Annual Report 2023/24  
(1<sup>st</sup> April 2023 – 31<sup>st</sup> March 2024)**

**Dr Tanya Levine: Director LRCTC**

**Mr Mark Terry: Manager LRCTC**

**Mr John McGloin: Deputy Manager LRCTC**



**London Regional Cytology Training Centre**

**World class training for cancer screening healthcare professionals**

## Table of Contents

No.	Topic	Page
<b>1.</b>	<b>Circulation List</b>	3
<b>2.</b>	<b>Staff List</b>	4
<b>3.</b>	<b>Executive Summary</b>	5
<b>4.</b>	<b>Course Programmes: Biomedical Scientists, Cytoscreeners &amp; MLA's</b>	6
i)	Pre-registration	6
ii)	Update Courses for BMS/Cytoscreeners	7
iii)	One Day Gynae Update for Consultants and APs	7
iv)	Non-gynaecological Training for BMS Staff	7
v)	Introductory Course for MLAs	7
<b>5.</b>	<b>Course Programmes: Pathologists &amp; Specialty Training Doctors</b>	8
i)	Pathologists Course	8
ii)	Medical Specialist Trainees Course (ST1 & ST2)	8
iii)	ST3+ Training	9
<b>6.</b>	<b>Course Programmes: Cervical Sample Takers</b>	10
i)	Cervical Sample Taker Initial Training	10
ii)	Training for Assessors & Mentors	11
iii)	Cytology for Colposcopists	11
<b>7.</b>	<b>Additional Portfolio Courses</b>	11
<b>8.</b>	<b>Other Activities of the LRCTC</b>	12
<b>9.</b>	<b>National Invasive Cancer Audit</b>	13
<b>10.</b>	<b>Further Educational Support</b>	13
<b>11.</b>	<b>Future Aims</b>	14
<b>12.</b>	<b>Appendices</b>	15
ii)	LRCTC Course Activity Report 2023/24	16
iii)	Course Evaluations	19
iv)	New Commissions & Candidate Numbers	20
v)	NHSCSP Certificate of Approval	22
v)	LRCTC Annual Course Planner 2023 LRCTC Annual Course Planner 2024	23
vi)	Retrospective and prospective Pre-registration course attendance	25

## 1. Circulation List

<b>Organisation</b>	<b>Name</b>	<b>Title</b>
NHS England (London)	Lynda Frost	Head of Quality, Patient Safety and Commissioning
NHS England (London)	Jennifer Ogbata	Quality, Patient Safety and Commissioning Manager
NHS England (London)	Veronica Pietralito	Deputy Quality, Patient Safety and Commissioning Manager
NHS England (London)	Catherine Horsfield	Head of School of Pathology
London SQAS	Sonya Narine	Head of London SQAS (Screening)
LNWUH NHS Trust	Pippa Nightingale	Chief Executive Officer
LNWUH NHS Trust	Simon Crawford	Director of Strategy and Deputy Chief Executive
LNWUH NHS Trust	Dr Ayesha Akbar	Divisional Clinical Director Integrated Clinical Services
LNWUH NHS Trust	Kay Sandhu	Divisional General Manager Integrated Clinical Services
LNWUH NHS Trust	David Stokes	Pathology General Manager
NHSCSP Cytology Education Office	Sharon Whitehurst	NHSCSP Cytology Education Manager

Also available via our web-site: [www.lrctc.org.uk](http://www.lrctc.org.uk)

## 2. Staff List

LRCTC staff member	Position
Dr Tanya Levine	LRCTC Director and Consultant Histopathologist
Mr Mark Terry	LRCTC Manager and Senior Tutor
Mr. John McGloin	LRCTC Deputy Manager and Senior Tutor
Dr Gillian Williams	LRCTC Senior Tutor – Consultant Histopathologist
Ms Mary Madigan	LRCTC Administrator

### Staffing

All staff have permanent contracts covering their time with the LRCTC.

Other Education Providers: External Lecturers	
<p><b>Dr Ashish Chandra</b> Histo/cytopathologist</p> <p><b>Dr Padma Menon</b> Histo/cytopathologist</p> <p><b>Dr Martina Munonyara</b> Histo/cytopathologist</p>	<p><b>Dr Miguel Perez-Machado</b> Histo/cytopathologist</p> <p><b>Dr Baljit Gill-Barman</b> Histo/cytopathologist</p> <p><b>Dr Maria Buttice</b> Histo/cytopathologist</p>
<p><b>Jacqui Hodgson</b> Practice Nurse Educator / Clinical Trainer</p> <p><b>Karen Gray</b> Practice Nurse Educator / Clinical trainer</p>	<p><b>Valerie McMunn</b> Senior Nurse Educator &amp; Clinical Advisor</p>

### 3. Executive Summary

The LRCTC ran a full and varied training calendar in 2023/24.

Compared to the previous year student numbers were equivalent although the number of courses that ran showed a slight decrease:

**627** candidates in 2023/24 compared with 629 in 2022/23, attending **41** courses & study sessions (47 courses in 2022/23)

There continues to be a demand for training in all areas and these were successfully met by flexibility in course delivery.

Courses continued to be delivered both face to face and on-line utilising MS Teams with some blended learning courses utilising a combination of both methods. On-line teaching included live discussion of cases, utilising CellSens software to facilitate visualisation of slides.

#### Course Details 2023/24

41 formal courses were run during 2023/2024 (47 courses in 2022/23)

- 3 Cytoscreener/BMS pre-registration courses
  - 5 Cytoscreener/BMS post-registration course
  - 3 BMS non-gynaecological courses
  - 1 Assessor training session
  - 18 Medical courses
    - 2 Pathologist/AP update courses
    - 2 Pathologist non-gynaecological courses
    - 2 ST3 revision courses
    - 2 ST1 courses
    - 2 ST2 courses
    - In addition, there were 8 ST1/2/3 study sessions
  - 6 Sample taker initial training courses
  - 3 Sample taker assessor and mentor update courses
  - 2 Colposcopy courses
- A total of **627** persons attended courses in 2023/24. **561** candidates (89%) were from the London region

- The evaluation scores (ranging from 1 to 5) for all courses, derived from anonymous student feedback, ranged from **4.17** to **5.0**. **100%** of all feedback scored in the highest tier category: “highly relevant” for working practice.

#### **4. Course Programmes: Biomedical Scientists, Cytoscreeners and MLA’s**

##### **i. Pre-Registration**

The **Introductory Course** was run on 3 to 28 April 2023.

**4** students attended from the London area

**Follow-up Courses** ran on 17-21 July 2023 and 11-15 March 2024

**12** students attended, 7 from outside the London area.

The **Pre-exam** revision course did not run as the current trainee cohort are not yet at the required level of training to apply for the NHS CSP exam.

- See **Appendix 6**: Student progress

We continue to provide support and feedback required by trainees, via ongoing e-mail exchanges and on-line discussions with the setting and marking of assignments to support the completion of the NHS CSP Training portfolio. With candidate numbers being low within the NHS CSP training programme, we have adopted a flexible approach to the timetabling of our courses to adapt to their individual needs. For example. The Introductory Course may be run as either 2 x two training weeks or as a 4 week block, and whereas in the past we used to run this course in March & October each year, the dates are now fully flexible.

New trainees at Cervical Screening London (CSL) have been appointed and the LRCTC will support their continued training via the required pre-registration courses going forwards into 2024/25

## **ii. Update Courses for Biomedical Scientists & Cytoscreeners**

It is an NHSCSP mandate that all BMS and Cytoscreener staff involved in screening cervical cytology attend 3 days' worth of update course every three years.

The LRCTC offers a rolling programme of 3 different one day updates in the three - year period. Our latest cycle started in April 2020 but has been extended through to the end of 2024 due to disruption caused by the COVID-19 pandemic early in the cycle.

5 update days were held with 50 candidates attending.

## **iii. One Day Gynae Update for Consultants and Advanced Practitioner staff**

Our one-day update for consultant pathologists and advanced practitioner biomedical scientists has run since 2008 and aims to maintain their continued professional development in cervical cytology.

Two courses were run on 5 May 2023 and 1 December 2023 with 11 attendees.

## **iv. Non-gynaecological Training for BMS Staff**

The LRCTC has an enhanced non-gynaecological cytology training portfolio for BMS staff to support the IBMS Diploma in Expert Practice in Non-Gynaecologic Cytology. The training school offers modules in urinary, respiratory, and serous fluid cytology to support BMS staff as part of CPD and career progression.

- Respiratory Cytology course was held on 5–6 September 2023 with 5 candidates.
- Urinary Cytology course was held on 4-5 July 2023 with 7 candidates.
- Serous Fluid course was held on 3-4 May 2023 with 6 candidates.

## **v. Introductory Course for Medical Laboratory Assistants**

The MLA course was not run this year due to no applications.

We will continue to offer this training on an ad hoc basis.

## **5. Course Programmes: Pathologists and Speciality Training Doctors**

### **i. Pathologists Course**

The LRCTC, since its inception in 1979, has run Pathologist courses aimed primarily at trainee pathologists about to sit their MRCPPath examination. In accordance with the Royal College of Pathologists training syllabus, the pathologist's course comprises of two parts: a one-week non-gynaecological cytology course with optional exam component and a three day gynaecological course with an optional exam component.

The five-day non-gynaecological course for Pathologists ran on 11-15 September 2023 and 4-8 March 2023 with a total of 29 attendees.

The three-day gynaecological cytology pre-exam course is no longer in demand. There is however continued demand from pathologists who are submitting their CESR application for gynaecological cytology training.

If pathologists already have LBC (ThinPrep) they can attend the LRCTC and screen through the requisite slide numbers in their own time. If the candidates have no previous knowledge of LBC there is a need for a basic ST1 gynae cytology course which they can attend at the LRCTC, providing they are based within London and places are available. Additional screening slides can then be seen in their own time, facilitated by the LRCTC with feedback and "ad hoc" teaching as required.

5 CESR candidates attended the LRCTC from 1<sup>st</sup> April 2022 to 31<sup>st</sup> March 2023.

### **ii. Medical Specialist Trainees Course (ST1 & ST2)**

The LRCTC provides a five-day basic gynaecological cytology course for London Regional ST1's, contracted by NHS England School of Pathology (London and South-East) as part of their specialist pathology training.

The course ran over two 5-day sessions in November 2023 with a total of 26 attendees.

Trainees were very complimentary as to the overall quality and content of the course and appreciated the interactive nature of the sessions.

RCPPath guidance for junior doctor training in Histopathology require Specialist trainees in their first and second years (ST1 and ST2 respectively) to complete a



training record of 150 cervical cytology cases and 150 non-gynaecological cases in their first year which increases to 200 cases of each in their second year.

From past agreement with HEE London and South-East School of Pathology the LRCTC provides additional pathologist cytology training to give a robust framework for cytological interpretation for all year 1 and 2 trainees in the London and South East of England Regions.

However, due to past limitations to capacity allowing placements at CSL, and following discussions with the School of Pathology, the training programme for all STs has been changed for 2023-24. Primarily this has entailed additional training weeks at the LRCTC for all ST1s and ST2s, with a focus on “real-time” reporting and CSL placements for all the ST3+s. This targeted approach has allowed us to refocus on the areas most appropriate to the ST year groups i.e., more emphasis on formal teaching and training within the first two years, and more exposure to live reporting, MDTs and Cancer audit with the specialist years.

For 2023/24 the following format has been adopted:

- All ST1s spent 2 full weeks at the LRCTC- one in November and one in April
- All ST2s spent 1 full week at the LRCTC in January
- Additionally, for all ST1s and ST2s, there is a monthly programme of on-line topic-directed study days specifically developed by the LRCTC.
- Access to the LRCTC for additional slide workshops to meet prescribed screening totals, if required.

Additional funding from NHS England, agreed at the beginning of the 2023/24 academic year, has allowed the LRCTC to expand its training commitment to fully support ST1 and ST2 training without the requirement to involve any other outside organisations.

### **iii. ST3 + Training**

As part of its current contract 2023/24 the LRCTC has supported all ST3s and above opting to progress their studies in gynaecological cytology.

During this academic year, an expansion of the ST3+ training programme now allows for a minimum of 5 weeks per trainee (previously 3 weeks) to be assigned to gynaecological cytology.

For 2023/24 this included:

- One 4-days' worth of topic specific, study sessions
  - 9 – 14 May 2023
- One 4-days' worth of case screening
  - catchup session: 8 – 12 January 2024
- One day study session and evaluation
  - 10<sup>th</sup> January 2024
- Four planned weeks spent at CSL (previously 2 weeks)
  - From Sept 2023, ongoing through to May 2024
- Optional additional time spent at CSL or the LRCTC dependent upon individual requirements.

This is the first year that this comprehensive training programme has been run, supported by additional contractual arrangements with NHS England, and its success has provided the template for future ST3+ training into 2025 and beyond.

## **6. Course Programmes: Cervical Sample Takers**

### **i. Cervical Sample Taker Initial Training.**

(Formerly known as the Foundation Course)

This is a two-day theoretical introductory course run by LRCTC to enable suitably qualified nurses and doctors to be trained in cervical sample taking, coupled with a practical portfolio whereby trainees take and record a required number of adequate cervical samples leading to final certification.

The Initial Training course covers all required elements of the theoretical training plus providing support during the 6-month training period of log-book completion. The final element of the training process requires an External Assessment of the trainee's competency currently co-ordinated via the local Training Hubs and supported by the LRCTC.

There continued to be a steady demand for this Royal College of Nursing accredited course.

6 courses were held in 2023/24 with **64** attendees.

## ii. Training for Assessors & Mentors

This training is provided by the LRCTC via on-line Teams-based sessions and has proved popular as there is limited access to this resource elsewhere. They also form a basis for discussion forums for all Sample-takers.

3 courses were held in 2023/24 with 67 attendees.

## iii. Cytology for Colposcopists

The LRCTC, in collaboration with the BSCCP (The British Society for Colposcopy and Cervical Pathology), continues to offer this course for trainee Colposcopists replacing the need for a physical training placement within a cytology laboratory. This is offered as a one-day course delivered on-line.

Cytology for Colposcopists ran on 18 September 2023 and 17 January 2024 with a total of 33 candidates.

## 7. Additional Portfolio Courses

These courses have been developed in partnership with NHS London and remain within the LRCTC portfolio and are delivered as and when requested.

- **Cervical Sample Takers Update Courses**

The requirements for a 3 yearly mandatory update are now primarily met by a National on-line e-Learning for Healthcare (e-LfH) training module.

- **Primary HPV**

National implementation of Primary HPV testing as part of the NHS CSP is now complete. Apart from correspondence seeking advice or clarification on protocols, no specific training relating to Primary HPV has been requested this year.

- **Distance Learning**

The LRCTC has a dedicated website ([www.lrctc.org.uk](http://www.lrctc.org.uk)) which includes educational packages for CPD and distance learning.

We have developed a student access area on the website allowing course material and presentations to be more readily available and to act as an educational resource.

## 8. Other Activities of the LRCTC

- **Training Officer/ User Group Meeting**

The LRCTC maintains support for all training officers and engages with them through the internal verifiers and assessors forums.

Regular updates from the training centre are provided to London SQAS and to the London Cervical Screening Programme Recovery Board where training centre performance is a standing agenda item.

- **Examination Centre for the NHSCSP Training in Cervical Cytology**

The LRCTC is one of the national examination venues for NHSCSP Training in Cervical Cytology. The National NHS CSP examination for cervical cytology was held on 19 March 2024.

- **NHSCSP Assessors Training in Cervical Screening**

The LRCTC provided support to assessors primarily based at Cervical Screening London (CSL) during this year reflecting the new trainees in post within that organisation.

- **Screening and Technical External Quality Assurance (EQA)**

The LRCTC Manager is the National Scheme Organiser for the NHS CSP EQA schemes evaluating screener performance and technical quality of cervical samples.

The LRCTC facilities are used for EQA slide selection and evaluation by panel members as well as for photography of selected slides by LRCTC staff for inclusion in the EQA reports.

The LRCTC also hosts an on-line “virtual environment” to facilitate TEQA slide assessment.

- **NHS Service Provider Meeting**

As part of our contract renewal, the London NHS Service Providers group have met with NHS Health Education England, London & South-East to discuss annual reports and confirm action plans.

The last meeting took place on 21<sup>st</sup> November 2023

As of 1<sup>st</sup> April 2023, following a merger of Health Education England, NHS Digital, & NHS England into one organisation as of 1<sup>st</sup> April 2023, our contractual arrangements now reside with NHS England.

## **9. National Invasive Cervical Cancer Audit**

All newly diagnosed cases of cervical cancer require a local review to be undertaken of the patient's previous cervical cancer screening history.

For cases diagnosed prior to October 2021 there is a requirement for the cytology to undergo an external review at a UK Cytology Training Centre; these cases are reviewed by the LRCTC and a consensus diagnosis given.

The findings of these reviews are fed-back to the host laboratory and included on the National Cervical Cancer database. The majority of cases are photographed at the LRCTC and provide an invaluable and unique teaching resource on difficult diagnoses and missed cases that are fed-back to staff on Update training courses.

In 2023/24, the LRCTC received 17 cases from four regions totalling 32 slides (57 cases, 76 slides in 2022/23).

This represents a marked decrease in slide numbers requiring review following the changes in National Cancer Audit policy.

## **10. Further Educational Support**

The LRCTC has a library of gynaecological and diagnostic cytology cases together with workshop sets. These slides are available on request to clinical and scientific staff for review in supporting clinical staff in their pre-exam preparations and for educational purposes. Microscopes are booked in the departmental diary on an ad hoc basis during times when the department is not running any courses.

Requests for this purpose amounted to an additional 179 days of LRCTC facilities usage by 77 junior doctors.

The LRCTC also hosted a visit from 2 junior doctors from Singapore for a week in preparation for their MRCPPath exams.

Applications from overseas doctors seeking recognition of their qualifications via the Certificate of Eligibility for Specialist Registration (CESR) route are also supported by the LRCTC wherever feasible, and very much dependant upon the applicant previous experience, as outlined in Section 5.

The LRCTC provided assistance to 5 CESR applicants during this year.

The LRCTC rooms and facilities are used by other Trust departments including the multi-headed microscope which can be utilised for pathologist training meetings.

These regularly included training sessions for the GI consultant pathologists and for all junior doctors currently working within the Cellular Pathology Department at Northwick Park Hospital.

## **11. Future Aims**

New training initiatives will continue to be developed in response to demand.

For 2024/25 it is intended that all aspects of ST1, ST2, and ST3+ training will be finalised, whilst a new update in Gynaecological Cytology will be developed as per our 3 yearly cycle of mandated training.

## 12. Appendices

- **Appendix 1**
  - LRCTC Course and Student Activity Report 2023/24
  
- **Appendix 2**
  - LRCTC Course Evaluations
  
- **Appendix 3**
  - New Commissions and Candidate Numbers
  
- **Appendix 4**
  - Current Certificate of Approval from NHSCSP Assessment Scheme
  
- **Appendix 5**
  - Annual Course Planner 2023
  
- **Appendix 6**
  - Annual Course Planner 2024
  
- **Appendix 7**
  - Retrospective and prospective Pre-registration course attendance

**LRCTC Course and Student Activity Report 2023/24**

**Appendix 1**

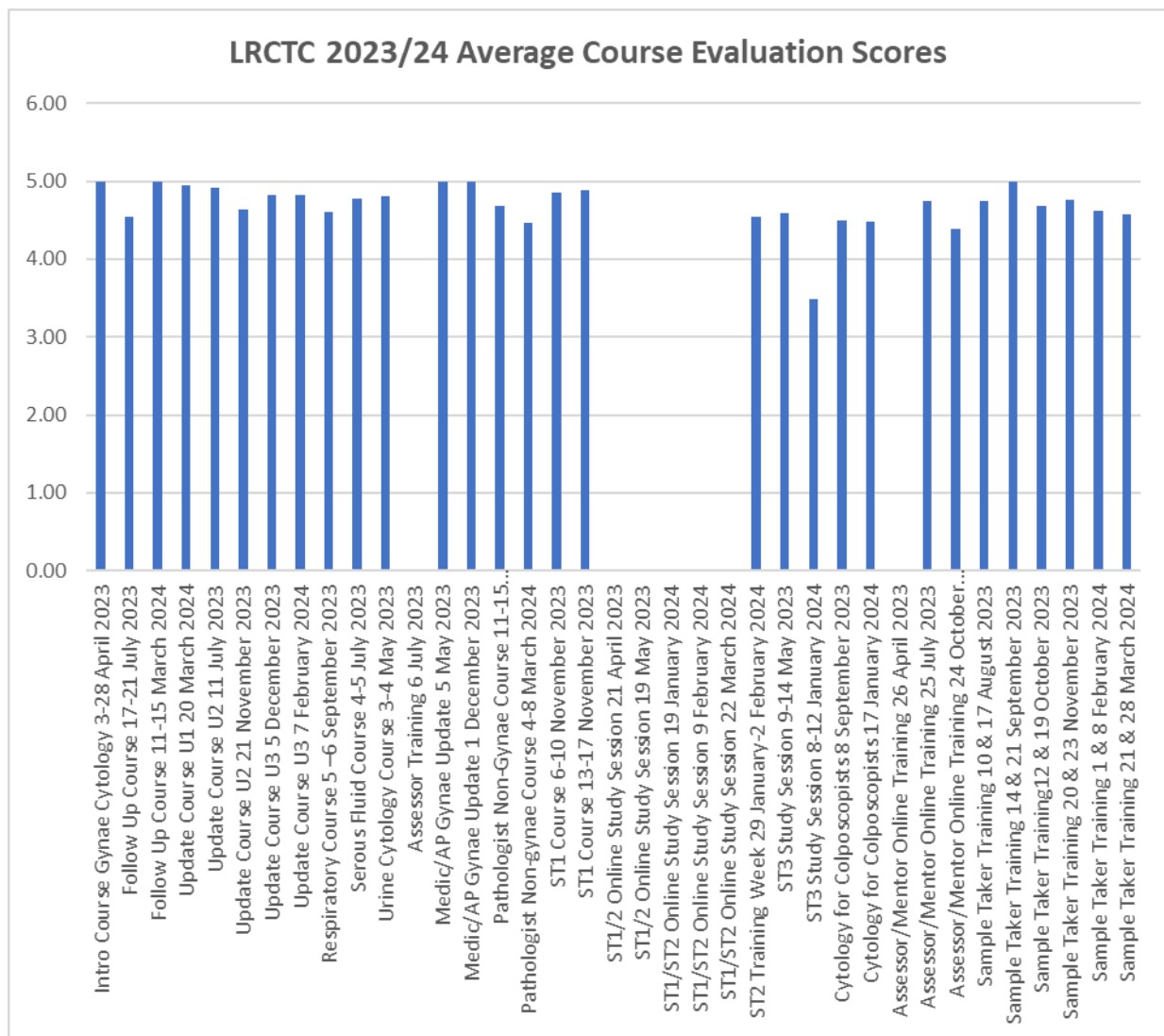
Course	Students			Evaluations			
	London contract	Non-London	Total	Returned	Average Score	No > 4	No <4
<b>BMS / Cytoscreener &amp; MLA</b>							
Introductory Course Gynae Cytology 3 – 28 April 2023	4	0	4	4	5	4	0
<del>Introductory Course Gynae Cytology 32 – 22 October 2023 (CANCELLED)</del>	-	-	-	-	-	-	-
Follow Up Course 17 – 21 July 2023	0	2	2	2	4.55	2	0
Follow Up Course 11 – 15 March 2024	5	5	10	5	5	5	0
<del>Pre-exam Course 18 – 22 September 2023 (CANCELLED)</del>	-	-	-	-	-	-	-
Update Course U1 20 March 2024	7	1	8	8	4.95	8	0
Update Course U2 11 July 2023	8	3	11	11	4.92	11	0
Update Course U2 21 November 2023	5	6	11	10	4.63	10	0
<del>Update Course U3 16 May 2023 (CANCELLED)</del>	-	-	-	-	-	-	-
<del>Update Course U3 26 September 2023 (CANCELLED)</del>	-	-	-	-	-	-	-
Update Course U3 5 December 2023	6	5	11	11	4.82	11	0
Update Course U3 7 February 2024	7	2	9	9	4.83	9	0
Respiratory Course 5 – 6 September 2023	2	3	5	5	4.61	5	0
Serous Fluid Course 4 - 5 July 2023	3	3	6	6	4.75	6	0
Urine Cytology Course 3 - 4 May 2023	5	2	7	7	4.81	7	0
<del>MLA Course 13 June 2023 (CANCELLED)</del>	-	-	-	-	-	-	-
<del>MLA Course 6 December 2023 (CANCELLED)</del>	-	-	-	-	-	-	-
Assessor Training 6 July 2023	2	0	2	-	-	-	-



Course	Students			Evaluations			
	London contract	Non-London	Total	Returned	Average Score	No > 4	No <4
<b>Pathologist / Junior Doctor</b>							
Medic/AP Gynae Update 5 May 2023	3	1	4	4	5	4	0
Medic/AP Gynae Update 1 December 2023	5	2	7	7	5	7	0
Pathologist Non-Gynae Course 11 - 15 September 2023	8	6	14	11	4.68	11	0
Pathologist Non-gynae Course 4 – 8 March 2024	8	7	15	11	4.47	11	0
ST1 Course 6-10 November 2023	13	0	13	13	4.86	13	0
ST1 Course 13-17 November 2023	13	0	13	13	4.88	13	0
ST1/2 Online Study Session 21 April 2023	27	0	27				
ST1/2 Online Study Session 19 May 2023	27	0	27				
<del>ST1/ST2 Online Study Session 16 June 2023-(CANCELLED)</del>	-	-	-	-	-	-	-
ST1/2 Online Study Session 14 July 2023	12	0	12				
ST1/2 Online Study Session 24 November 2023	35	0	35				
ST1/ST2 Online Study Session 15 December 2023	45	0	45				
ST1/ST2 Online Study Session 19 January 2024	39	0	39				
ST1/ST2 Online Study Session 9 February 2024	42	0	42				
ST1/ST2 Online Study Session 22 March 2024	36	0	36				
ST2 Training Week 22 January – 26 January 2024	12	0	12	11	4.97	11	0
ST2 Training Week 29 January – 2 February 2024	16	0	16	16	4.55	16	0
ST3 Study Session 9 – 14 May 2023	7	0	7	6	4.59	6	0
ST3 Study Session 10 January 2024	13	0	13	9	4.17	9	0

Course	Students			Evaluations			
	London contract	Non-London	Total	Returned	Average Score	No > 4	No <4
<b>Cervical sample taker</b>							
Cytology for Colposcopists 8 September 2023	9	7	16	15	4.5	15	0
Cytology for Colposcopists 17 January 2024	6	11	17	15	4.48	15	0
Assessor/Mentor Online Training 26 April 2023	23	0	23				
Assessor/Mentor Online Training 25 July 2023	33	0	33	18	4.74	18	0
Assessor/Mentor Online Training 24 October 2023	11	0	11	7	4.38	7	0
<del>Sample Taker Training Half day on-line 18 May 2023 Face to face 26 May 2023 (CANCELLED)</del>	-	-	-	-	-	-	-
Sample Taker Training Half day on-line 10 August 2023 Face to face 17 August 2023	10	0	10	10	4.75	10	0
Sample Taker Training Half day on-line 14 September 2023 Face to face 21 September 2023	11	0	11	9	5	9	0
Sample Taker Training Half day on-line 12 October 2023 Face to face 19 October 2023	9	0	9	7	4.68	7	0
Sample Taker Training Half day on-line 23 November 2023 Face to face 20 November 2023	12	0	12	12	4.76	12	0
Sample Taker Training Half day on-line 1 February 2024 Face to face 8 February 2024	14	0	14	12	4.62	12	0
Sample Taker Training Half day on-line 21 March 2024 Face to face 28 March 2024	8	0	8	8	4.58	8	0
<b>TOTAL 2023 - 2024</b>	<b>561</b>	<b>66</b>	<b>627</b>	<b>292</b>	<b>4.73</b>	<b>293</b>	<b>0</b>
<b>TOTAL 2022 - 2023</b>	<b>545</b>	<b>84</b>	<b>629</b>	<b>215</b>	<b>4.81</b>	<b>215</b>	<b>0</b>

Course Evaluations



N.B. Poor response for ST1/2 Online study session evaluations sent out via e-mail. To look at different ways of collecting this data in the future.

## New Commissions &amp; Candidate Numbers: Activity 2023-2024

London Regional Cytology Training Centre Commissioning Courses - Numbers for London Region Only 1 <sup>st</sup> April 2023 – 31 <sup>st</sup> March 2024						
Course Name	No. of planned courses per year	Actual no. of courses 23-24	Course Length	Total expected no. of trainees London	Actual no. of trainees London (+ total)	Comment
<b>1A. Pre-registration Programmes (2-year NHS CSP Training in Cervical Cytology for non-medical trainees)</b>						
Introductory Course in Gynaecological Cytology	1	1	20 days	2	4 (4)	✓
Follow-up Course	1	2	5 days	2	5 (7)	✓
Pre-Exam Course	1	0	5 days	0	0 (0)	No demand
Medical Laboratory Assistants (MLA) course	2	0	1 day	0	0 (0)	No demand
<b>1B. BMS Post-registration Programmes for qualified staff</b>						
Update Courses for BMS / Cytoscreeners (Mandatory)	5	5	1 day	29	33 (50)	✓
Gynaecological update for Consultants & Advanced Practitioners (Medics Update)	2	2	1 day	6	8 (11)	✓
<b>2. Histopathology trainees:</b>						
<b>A. For London &amp; KSS (ST1s &amp; ST2s)</b>						
Medical Specialist Trainees Course -Part 1 (ST1s only)	2	2	5 days	22	26 (26)	✓
Medical Specialist Trainees Course -Part 2 (ST1s only) *NEW COMMISSION	2	2	5 days	22	26 (26)	✓
Medical Specialist Trainees Course (ST2s only) *NEW COMMISSION	2	2	5 days	30	28 (28)	✓

Course Name	No. of planned courses per year	Actual no. of courses 23-24	Course Length	Total expected no. of trainees London	Actual no. of trainees London (+ total)	Comment
Online monthly tuition modules: Gynaecological cytology	9	8	0.3 day	52	263 33 (263)	Average 33 per session
Online monthly tuition modules: Non-gynaecological.	9	8	0.3 day	52	263 33 (263)	As above
<b>B. London &amp; KSS (ST3s+)</b>						
ST3+ sessions	2	2	4 days	14	20 10 (20)	Average 10 per session
<b>3. Diagnostic Cytology training for the wider Medical and Scientific Community</b>						
<b>A. For BMS staff</b>						
Non-gynaecological training for BMS staff (Serous Fluid, Respiratory & Urinary courses)	3	3	2 days	10	10 (18)	✓
Ad hoc training for London as required	Ad hoc	2	As required	As per demand	1 (2)	Training support provision
<b>B. For Medical staff</b>						
Pathologists Course: Non-gynaecological cytology	2	2	5 days	20	23 (29)	✓
Pathologists Course: Gynaecological cytology	1	0	3 days	0	0 (0)	Ad hoc support for CESR
<b>4. Training for NHS CSP support staff</b>						
Cervical Sample Takers Initial Training Course	3	6	2 days	30	64 (64)	✓
Cervical Sample Takers Assessor/Mentor training	1	3	0.5 day	18	67 (67)	✓
Cervical Sample Takers online "virtual" laboratory tour	6	10	1.5 hour session	30	95 (104)	✓
Cytology for Colposcopists (BSCCP approved)	2	2	1 day	5	15 (33)	✓
<b>TOTAL</b>	<b>56</b>	<b>62</b>		<b>344</b>	<b>481 (545)</b>	

**N.B.** If totals are calculated using absolute number of students rather than based on “average per session” then values equal **925** London-based trainees (**1015** trainees in total). This is directly comparable to 2022-23 figures of **741** London based trainees (**810** in total)



Protecting and improving the nation's health

## NHS Cervical Screening Programme

Assessment scheme for the approval of UK  
cytology training centres

### **CERTIFICATE OF APPROVAL**

This site meets the national standards required of a  
cytology training centre for staff working in the  
NHS Cervical Screening Programme

Centre: London Regional Cytology Training Centre

Date of issue: 17<sup>th</sup> March, 2017

Endorsed by the Clinical Professional Group for  
Cervical Screening Education & Training

---

This certificate is valid only if accompanied by a current annual notification of NHSCSP approval

Public Health England leads the NHS Screening Programmes

Still awaiting re-assessment by the NHS CSP Education  
Team – status quo for all National training centres

Course List 2023	1	2	3	4	5	6	7	8	9	10	11	12	13	14	15	16	17	18	19	20	21	22	23	24	25	26	27	28	29	30	31	
January	S	BH					S	S						S	S	AT					S	S					COLP	S	S			
February	STF			S	S				STF		S	S				STF (M)		S	S						S	S						
March	STF	STF		S	S	PNG	PNG	PNG	PNG	PNG	S	S			U2			S	S			STF Imp			S	S						
April	S	S	IC	IC	IC	IC	BH	S	S	BH	IC	IC	IC	IC	S	S	IC	IC	IC	IC		S	S	IC	IC	AT	IC	IC	S	S		
May	BH		U	U	MU	S	S	BH					S	S		U3		STF		S	S				STF		S	S	BH			
June			S	S						S	S		MLA				S	S						S	S							
July	S	S		S	S			S	S		U2				S	S	FU	FU	FU	STF	FU	S	S		AT		STF		S	S		
August				S	S						S	S							S	S					S	S	BH					
September		S	S		R	R			S	S	PNG	PNG	PNG	PNG	PNG	S	S	PE	PE	PE	STF	PE	S	S		U3		STF	COLP	S		
October	S	IC	IC	IC	IC	IC	S	S	IC	IC	IC	IC	IC	S	S	IC	IC	IC	IC	IC	S	S	IC	IC	IC	IC	IC	S	S			
November				S	S	ST1	ST1	ST1	ST1	ST1	S	S	ST1	ST1	ST1	STF	ST1	S	S			U2		STF		S	S					
December	MU	S	S		U3	MLA			S	S						S	S						S	S	BH	BH						S

Key	
Introductory Course	IC
Update	U1 U2 U3
Follow-up Course	FU
Sample Taker Foundation	STF STF
Pre-Exam Course	PE
MLA Course	MLA
Respiratory	R
ST1 course	ST1
Serous Fluid	S
Medics / AP Update	MU
Urine	U
ST1/ST2/ST3 Study	
Pathologists-Non Gyna	PNG
Pathologists Gynae	PCG
Assessors Training	AT
Colposcopy	COLP

Course List 2024	1	2	3	4	5	6	7	8	9	10	11	12	13	14	15	16	17	18	19	20	21	22	23	24	25	26	27	28	29	30	31
January	BH				S	S	CU	CU			CU	CU	S	S			COLP			S	S	ST2	ST2	ST2	ST2	ST2	S	S	ST2	ST2	ST2
February	STF	ST2	S	S			U3	STF			S	S				S	S						S	S							
March		S	S	PNG	PNG	PNG	PNG	PNG	S	S	FU	FU	FU	FU	FU	S	S		NHS Exam	U1	STF		S	S				STF	BH	S	S
April	BH				S	S	ST1	ST1	ST1	ST1	ST1	S	S	ST1	ST1	ST1	ST1	ST1	S	S		AT	U3					S	S		
May	U	U		S	S	BH				MU	S	S				STF			S	S			STF		S	S	BH				
June	S	S					S	S			U3		MLA		S	S													S	S	
July			S	S		S	S						S	S						S	S				U3	COLP		S	S		
August			S	S					S	S						S	S						S	S	BH						S
September	S		AT	R	R		S	S	PNG	PNG	PNG	PNG	PNG	S	S						S	S						S	S	IC	
October	IC	IC	IC	IC	S	S	IC	IC	IC	IC	IC	S	S	IC	NHS Exam	IC	IC	IC	S	S	IC	IC	IC	IC	IC	IC	S	S			
November		S	S	ST1	ST1	ST1	ST1	ST1	S	S	ST1	ST1	ST1	ST1	ST1	S	S						S	S						S	
December	S			MLA		MU	S	S						S	S						S	S				BH	BH		S	S	

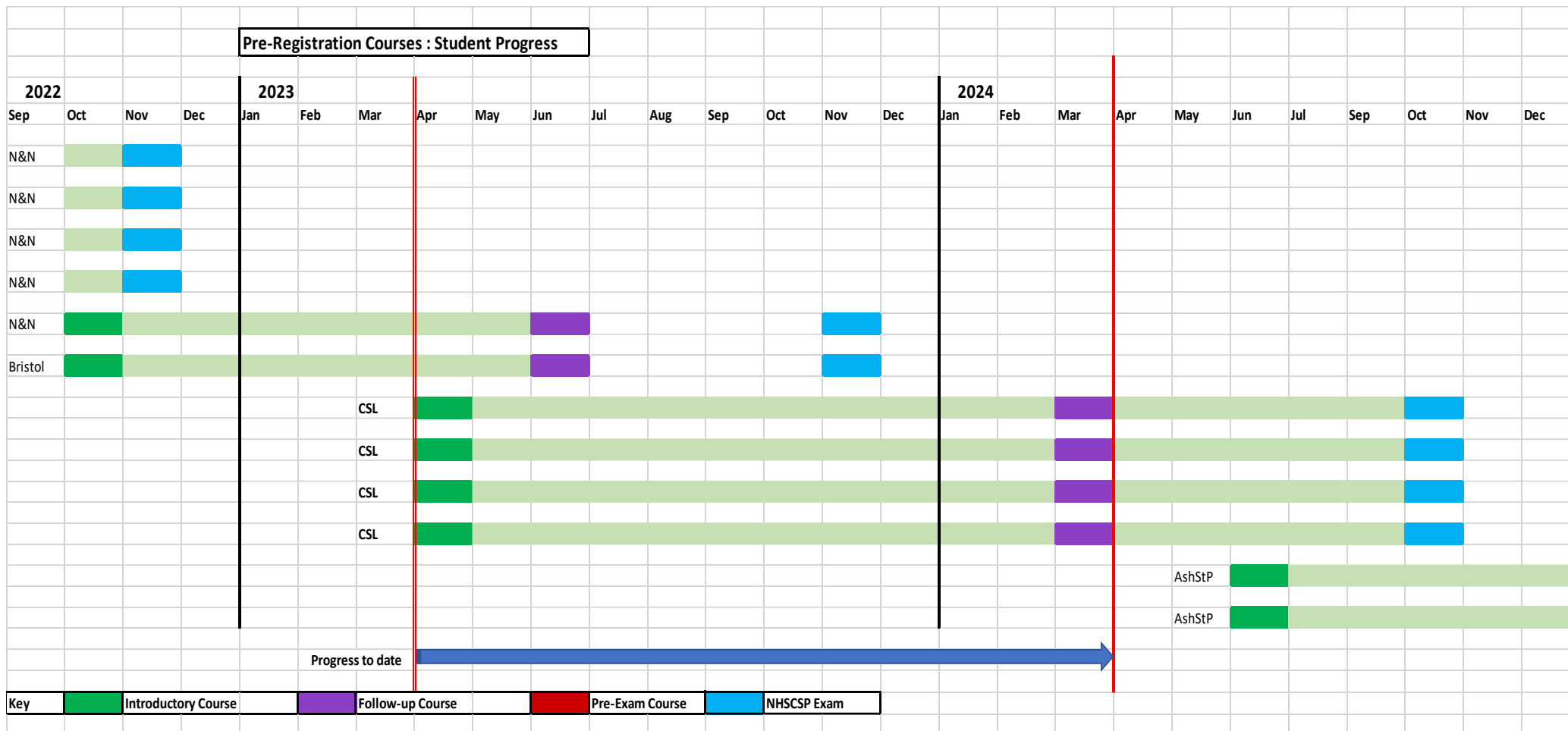
  

Key			
Introductory Course	IC	Update	U1 U2 U3
Follow-up Course	FU	Sample Taker Foundation	STF STF
Pre-Exam Course	PE	MLA Course	MLA
Respiratory	R	ST1 course	ST1
Serous Fluid	S	Medics / AP Update	MU
Urine	U	ST1/ST2/ST3 Study	
Pathologists-Non Gyna	PNG	Pathologists Gyna	PCG
Assessors Training	AT	Colposcopy	COLP

- Additional dates to be added for BMS Update Course & Sample-taker training dependent upon demand.
- Dates for Introductory Course likely to change to June/July 2024 dependent upon start date of new trainees.



**Student Progress:** Retrospective and prospective Pre-registration course attendance



As of 1<sup>st</sup> April 2023, 6 students are recorded as BMS trainees.  
 From 1<sup>st</sup> April 2024, 4 students (London) will still be BMS trainees with 2 new trainees starting in June.

**This page has been left intentionally blank**