

The London Regional Cytology Training Centre

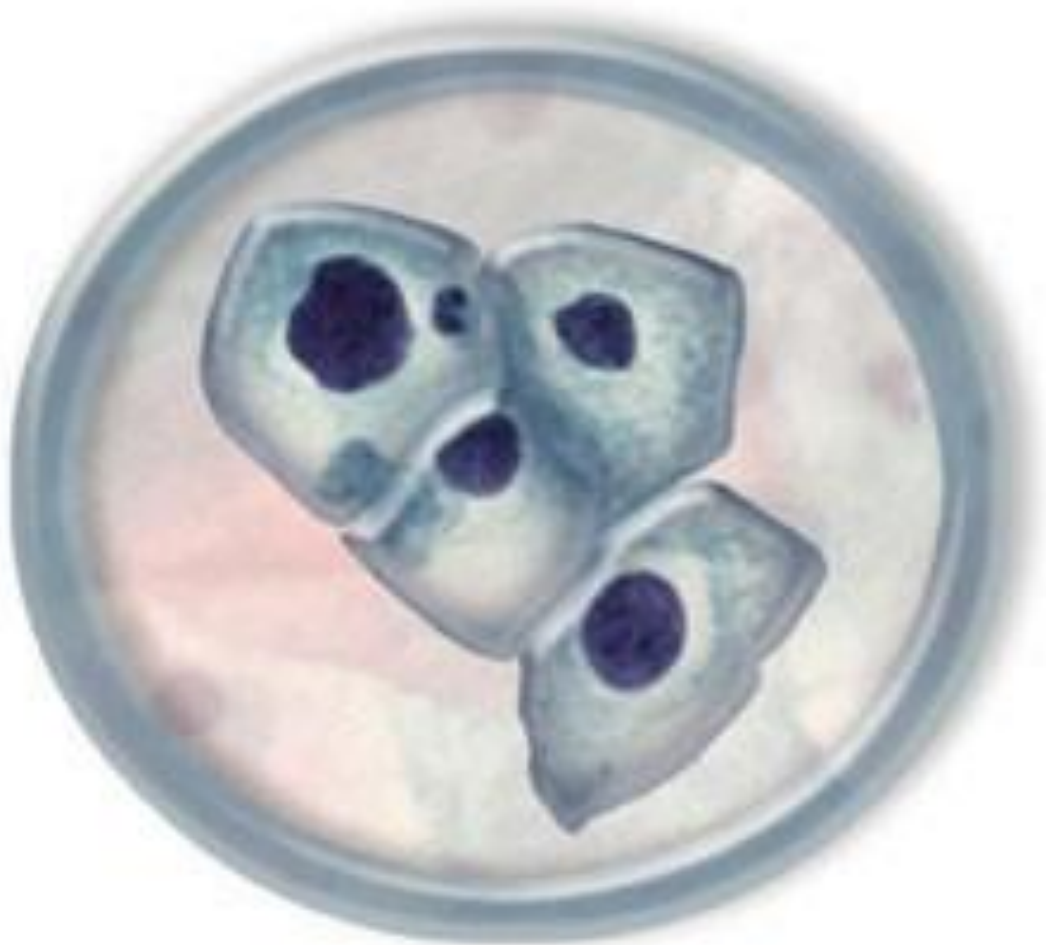
Annual Report 2019/20

Dr Tanya Levine: Director LRCTC

Mr David Smith: Deputy Director LRCTC

Mr Mark Terry: Manager LRCTC

Mr John McGloin: Deputy Manager LRCTC



London Regional Cytology Training Centre

World class training for cancer screening healthcare professionals

Table of Contents

No.	Topic	Page
1.	Circulation List	3
2.	Staff List	4
3.	Executive Summary	5
4.	Introduction	6
5.	Pre-Registration Programme	6
i)	For trainee cytologists (biomedical scientists)	6
ii)	For community trainee cervical sample taker training	7
6.	Qualified Staff CPD Programmes	8
i)	Update Course for BMS / Cytoscreeners	8
ii)	Introductory Course for MLAs	8
iii)	One Day Gynae Update for Consultants and APs	8
iv)	LBC Conversion Course	8
v)	Pathologists Course	9
vi)	Medical Specialist Trainees Course	9
7.	Additional Courses	9
i)	Non-gynae Training for BMS Staff	9
ii)	Cervical Sample Takers Update Course	10
iii)	Primary HPV	10
iv)	Distance Learning	10
8.	Other Activities	11
9.	Course Feedback	12
10.	Invasive Cancer Audit	13
11.	Further Educational Support	14
12.	ST1 and ST2 Training	14
13.	Future Aims	15
14.	Appendices	16
i)	LRCTC Annual Course Planner 2020	17
	LRCTC Annual Course Planner 2019	18
ii)	LRCTC Course Activity Statistics 2019/20	19
iii)	New Commissions & Candidate Numbers	21
iv)	NHSCSP Certificate of Approval	22
iv)	LRCTC 3 Month Rolling Pre-Reg Course Attendance	23

1. Circulation List

Organisation	Name	Title
Health Education England (London)	Lynda Frost	Head of Quality, Patient Safety and Commissioning
Health Education England (London)	Jennifer Ogbata	Quality, Patient Safety and Commissioning Manager
Health Education England (London)	Veronica Pietralito	Deputy Quality, Patient Safety and Commissioning Manager
NHS London Service Provider Group	Mr Mark Smith	Chairman
London SQAS	Khadidja Bichbiche	Head of London SQAS (Screening)
NWLUH Trust	Sir Amyas Morse	Chairman
NWLUH Trust	Mr Simon Crawford	Director of Strategy and Deputy Chief Executive
NWLUH Trust	Ms Kay Sandhu	Divisional General Manager Integrated Clinical Services
NWLUH Trust	Mr David Stokes	Pathology General Manager
NHSCSP Cytology Education Office	Ms Sharon Whitehurst	NHSCSP Cytology Education Manager

Also available via our web-site: www.lrctc.org.uk

2. Staff List

LRCTC staff member	Position
Dr Tanya Levine	LRCTC Director and Consultant Histopathologist
Mr David Smith	LRCTC Deputy Director and Cellular Pathology Laboratory Manager
Mr Mark Terry	LRCTC Manager and Senior Tutor
Mr. John McGloin	LRCTC Deputy Manager and Senior Tutor
Dr Gillian Williams	LRCTC Senior Tutor - Clinical Director of Pathology & Head of Department Histopathology
Ms Mary Madigan	LRCTC Administrator

Staffing

All staff have permanent contracts covering their time with the LRCTC.

Mr David Smith stepped down from the post of LRCTC Deputy Director in December 2019 following his appointment as Laboratory Manager to the newly created centralised cytology service – CSL (Cervical Screening London). It is hoped that his services will be retained as visiting guest lecturer in 2020.

Other Education Providers	
Pat Blencowe Matron and Sexual Health Therapist	Graham Calvert Psychology Lecturer

3. Executive Summary

- **18** formal courses were run
 - **2** pre-registration courses
 - **5** post-registration courses
 - **3** non-gynaecological courses
 - **5** medical courses (including ST1 courses, Medics/Advanced Practitioner one day update and pathologists Gynae and non-gynae courses)
 - **3** sample taker courses
- A total of **168** persons attended courses in 2019/20. **130** candidates were from the London region
- Additionally **15** face-to-face training sessions were organised to support the introduction of Primary HPV testing into the London Region with more than **500** attendees
- The evaluation scores (ranging from 1 to 5) for all courses, derived from anonymous student feedback, ranged from 4.58 to 5.0 i.e. **100%** of all feedback scored in the highest tier category: “highly relevant” for working practice.
- The LRCTC has been committed to additional on-going professional activities including EQA, national cervical cancer audit, and the implementation of Primary HPV in the London Region.
- This year, 2019 / 20, saw the National roll-out of Primary HPV testing and the formation of 8 “super-labs” in England, a reduction from the previous 49 regional laboratories. This has been a major logistical and staffing challenge for the NHS CSP supported by the implementation and roll-out of high quality training modules, both as part of PHE’s national programme and via local delivery and education from the Cytology Training Centres, of which the LRCTC has played a key role.
- Given the reduction in laboratory numbers nationally there has been a reduction in the number of courses run, and number of participants attending at the LRCTC, similar to other Cytology Training Centres
- To offset this reduction, the LRCTC has been in extensive discussions with HEE London and South East School of Pathology to provide additional pathologist cytology training. The LRCTC has agreed to provide formal cytology training for London and South-East England ST1 and ST2 junior pathology trainees, which can be delivered within the capacity freed up by the reduction in cervical cytology BMS numbers
This training is projected to commence in Autumn 2020.

The **Introductory Course** scheduled for October 2019 was run with **2** students attending, one of whom came from abroad.

We would normally plan to run this course twice a year but due to lack of demand, this course will now only be offered in October of each year. We will however retain a flexible approach to address any urgent needs for new appointed trainees.

The **Follow-up Course** planned for 8 – 12 July 2019 was cancelled due to lack of candidates. A further course, to meet the requirements of the 2 students who attended the 2019 Introductory Course, is planned for June 2020

The one week **Pre-exam** revision course ran on 19 – 23 August 2019 with **3** students attending.

We are pleased to announce that all 3 students went on to pass the NHS CSP Training in Cervical Cytology exam on 8th October 2019.

We continue to provide support and feedback required by trainees, via ongoing e-mail exchanges and telephone discussions with the setting and marking of assignments supporting the completion of the NHSCSP Training portfolio.

One on-site tuition day was held on 12th February at Ashford St Peters Hospital attended by **15** staff members

i) Community Trainee Cervical Sample Taker Training

The **Cervical Sample Taker Initial Training Course**. (Formerly known as the Foundation Course)

This is a two day theoretical introductory course run by LRCTC to enable suitably qualified nurses and doctors to be trained in cervical sample taking, coupled with a practical portfolio whereby trainees have to take a minimum number of adequate smears. After successful completion of all parts of the portfolio, they will achieve certification.

This course was successfully re-accredited with the Royal College of Nursing in September 2019 (RCN 6957)

Two courses were run on 23 & 27 September 2019 & 9 & 13 December 2019, with a total of **36** attendees.

6. Qualified Staff CPD Programmes

i) Update Courses for BMS/Cytoscreeners

It is a mandatory requirement from the NHS CSP that all Cytoscreener and BMS staff screening cervical cytology attend an update course every three years.

The LRCTC ran 4 three-day update courses on 14-16 May 2019, 16-18 July 2019, 17-19 September 2019, and 23-26 November 2019

A total of **44** Cytoscreeners and BMSs attended.

Demand for this course diminished throughout the year as the outcome of the Primary HPV tendering process became apparent leading to many cytologists leaving the profession.

This modular three day update course is regularly re-populated with current topic related slides and in addition is completely re-vamped every three years at the start of each new Update cycle. The new cycle will begin in 2020.

ii) Introductory Course for Medical Laboratory Assistants

Due to lack of demand the planned MLA courses for this year had to be cancelled.

iii) One Day Gynae Update for Consultants and Advanced Practitioner staff

A one day update for consultant pathologists and advanced practitioner biomedical scientists has run since 2008, and aims to maintain their continued professional development in cervical cytology.

One course was run on 1 November 2019 with **2** attendees.

iv) Liquid Based Cytology Conversion Course

From time-to-time the LRCTC is asked to run a LBC conversion course. Most staff are fully trained on the ThinPrep methodology but the LRCTC will run ad-hoc courses e.g. for staff who may have moved into the region and previously screened on another technology.

1 course was held on 8 April 2019 with **1** student attending.

v) Pathologists Course

The LRCTC, since its inception in 1979, has run Pathologist courses aimed primarily at trainee pathologists about to sit their MRCPPath examination. In accordance with the Royal College of Pathologists training syllabus, the pathologist's course comprises of two parts; a one week non-gynaecological cytology course with optional exam component and a three day gynaecological course with an optional exam component. The five day non-gynaecological courses ran on 9-13 September 2019 and 9-13 March 2020 with a total of **24** attendees.

The three day gynaecological cytology course was scheduled for 23 –25 March 2020 but did not run due to lack of applicants. This is a continued reflection of the fact that very few trainees wish to pursue gynaecological cytology in their careers.

vi) Medical Specialist Trainees Course (ST1)

The LRCTC provides a five day basic gynaecological cytology course for London Regional ST1's, contracted by HEE School of Pathology (London and South-East) as part of their specialist pathology training.

Two courses ran on 4 – 8 November 2019 and 11-15 November 2019 with a total of **22** attendees.

7. Additional Courses Developed in Partnership with NHS London

i) Non-gynaecological Training for BMS Staff

The LRCTC has enhanced its non-gynaecological cytology training portfolio for BMS staff to support the IBMS Diploma in Expert Practice in Non-Gynaecologic Cytology. The training school offers modules in urinary, respiratory and serous fluid cytology in order to support BMS staff as part of CPD and career progression.

One urinary cytology course was held on 24 – 25 July 2019 with **3** attendees.

One respiratory course was held on 19 – 20 June 2019 with **8** attendees.

One serous cytology course was held on 8-9 May 2019 with **5** attendees.

ii) Cervical Sample Takers Update Courses

This was completely updated during 2018/19 and was rolled-out from April 2019 to provide a face-to-face alternate to compliment the NHSCSP online update course for the introduction of Primary HPV testing.

Although the requirements for a 3 yearly mandatory update are now primarily met by a National on-line e-Learning for Healthcare (e-LfH) training module, this year we have had some specific requests for updates, in particular in preparation for the introduction of Primary HPV testing.

One update was held at the LRCTC on 25th November for **18** candidates followed by 3 site specific updates for Bromley & Lewisham nurses on 11th December 2019, and the 10th & 15th January 2020 for approx. **60** candidates.

iii) Primary HPV

National guidance for the implementation of Primary HPV testing as part of the NHS CSP commenced a roll-out of the service from April 2019 with full conversion completed by March 2020.

This was aided by e-LfH online training modules for sample-takers and colposcopy but additionally required further support locally by the LRCTC

We provided specific face-to-face training sessions on:

4th April, 17th May, 22nd May, 26th June, 27th June, 9th July, 10th July, 31st July, 20th August, 22nd August, 27th August, 28th August, 14th October, 11th November, & 20th November.

These provided targeted training opportunities for GP & nurses, Colposcopy units, and laboratory staff. The sessions in November, in collaboration with the newly formed cervical cytology provider Cervical Screening London (CSL), were attended by **356** participants.

iv) Distance Learning

The LRCTC has a dedicated website (www.lrctc.org.uk) which includes educational packages for CPD and distance learning.

8. Other Activities of the LRCTC

Training Officer/ User Group Meeting

Training officer/NHSCSP assessor meetings are usually held to gain feedback from laboratories on our courses and service requirements as well as to keep them updated and disseminate information on current issues. This year, in response to increased e-mail correspondence relating to Primary HPV testing, our service users have been encouraged to attend our Primary HPV discussion group meetings. Updates from the training centre have additionally been provided at local SQAS laboratory meetings and via e-mail notifications.

Examination Centre for the NHSCSP Training in Cervical Cytology

The LRCTC is one of the national examination venues for NHSCSP Training in Cervical Cytology. We hosted the exam at Northwick Park on 8th October 2019.

NHSCSP Assessors Training in Cervical Screening

Assessor training is incorporated into the Tuition Days/Host Laboratory visits and via e-mail exchange.

Screening and Technical External Quality Assurance (EQA)

The regional EQA schemes have been replaced by centralised national EQA schemes evaluating screener performance and technical quality of cervical samples. The LRCTC Manager is currently the Deputy Scheme Organiser for these national programmes.

The LRCTC facilities continue to be used for slide selection and evaluation by panel members as well as used for photography of selected slides by LRCTC staff for inclusion in the EQA reports.

1 session was held on 6th June 2019

NHS Service Provider Meeting

As part of our contract renewal, the London NHS Service Providers group last met with NHS Health Education England, London & South East to discuss annual reports and confirm action plans on 9th May 2019.

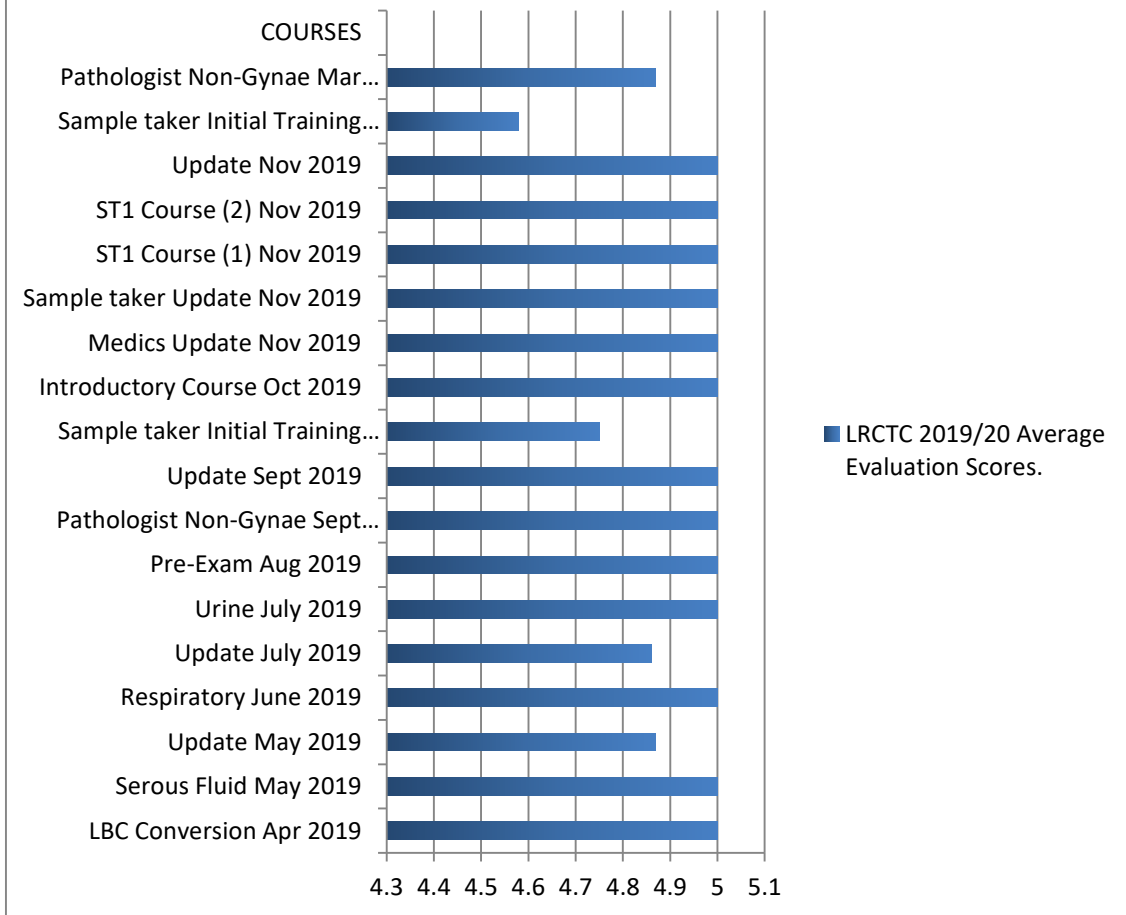
Contractual obligations between HEE and the LRCTC currently remain unchanged. However, in light of the decreasing requirement for mandatory cytology training, future options to explore the expansion of training programmes currently offered, to include junior doctor (ST1 and ST2) training, have been agreed.

9. Course Feedback Evaluation Scores

Evaluation forms are given to all course participants and completion of the forms is actively encouraged. All feedback is anonymous and each course topic is rated from 1 to 5 together with any pertinent comments. From this data, an average course score is calculated and the results are displayed in the chart below.

Over 2019/20, the LRCTC received **148** anonymised feedback forms covering all courses. **100%** of these rated the courses as “highly relevant” to student’s needs and work place requirements (score value greater than 4)

LRCTC 2019/20 Average Evaluation Scores.



Score range 1 to 5

Recorded scores: 4.58 to 5.0

10. National Invasive Cervical Cancer Audit

All newly diagnosed cases of cervical cancer require a local review to be undertaken of the patient's previous cervical cancer screening history.

In certain circumstances where cervical cytology has been performed, there is a requirement for the cytology to undergo an external review at a local UK Cytology Training Centre where the cases are reviewed individually by the LRCTC Director, Manager, and Deputy Manager and a single consensus diagnosis given following multi-headed microscopy review.

LRCTC receives external review cases from four regions and covers the largest area nationally: London, East of England, East Midlands and East Sussex.

In 2019/20, the LRCTC received **64** cases from four regions totalling **65** slides (68 cases, 99 slides 2018/19).

This represents an additional **9%** increase to the screening workloads of LRCTC staff, over and above the NHSCSP screening requirements for individuals.

The findings of the review are fed-back to the host laboratory and onto the National Cervical Cancer database. The majority of cases are photographed at the LRCTC and provide an invaluable and unique teaching resource on difficult diagnoses and missed cases that are fed-back to staff on Update training courses.

11. Further Educational Support

The LRCTC has a library of gynaecological and diagnostic cytology cases together with workshop sets. These slides are available on request to clinical and scientific staff for review in supporting clinical staff in their pre-exam preparations and for educational purposes. Microscopes are booked in the departmental diary on an ad hoc basis during times when the department is not running any courses.

Requests for this purpose amounted to an additional **55** days of LRCTC facilities usage.

The LRCTC rooms and facilities are used by other Trust departments especially the multi-headed microscope which is utilised for pathologist training meetings.

12. ST1 & ST2 Training

RCPATH guidance for junior doctor training in Histopathology require Specialist trainees in their first and second years (ST1 and ST2 respectively) to complete a training record of 150 cervical cytology cases and 150 non-gynaecological cases in their first year; which increases to 200 cases of each in their second year.

Currently, there is a one-week introduction to gynaecological cytology for new trainees held at the LRCTC in November of each year – the ST1 course. However there is no similar formal training for non-gynaecological cytology, and the monitoring of the quality of cytology training and reporting for ST1's and ST2's is ad hoc without formal structure.

In discussion with HEE London and South East School of Pathology it has been agreed that the LRCTC should provide additional pathologist cytology training to give a robust framework for cytological interpretation for all year 1 and 2 trainees in the London and South East of England Regions.

For ST1's this will include, in addition to the current 1 week introductory gynaecological cytology course, a further 1 week introductory non-gynaecological cytology course, and thereafter monthly topic-directed tuition days at the LRCTC. Additionally a week-long placement at Cervical Screening London (CSL) will be formally arranged.

For ST2's these innovative monthly tuition days will continue, building from the ST1 year and introducing more complex cases and difficult diagnostic scenarios. A further week's placement at CSL will be included.

It is anticipated that the LRCTC can operate this system within its current commitment to HEE and the School of Pathology.

13. Future Aims

It is the aim of the LRCTC to remain as one of national training centres for the provision of cytology teaching and training, albeit in a changing climate. However the LRCTC can offer great scope and flexibility in its approach to the provision of these services and is looking to develop the breadth of courses it provides whilst expanding upon the geographical area that it covers.

With the continued support and vision from Health Education England, London and the South-East, this would ensure that the London Regional Cytology Training Centre remains, not only as a pre-eminent centre for cervical cancer screening training but as a hub of excellence for non-gynaecological cytology training for medics and non-medics alike.

14. Appendices

Appendix 1

Annual Course Planner 2020 and 2019

Appendix 2

LRCTC Course and Student Activity Report 2019/20

Appendix 3

Appendix 4

Current Certificate of Approval from NHSCSP Assessment Scheme

Appendix 5

Retrospective and prospective Pre-registration course attendance

LRCTC Annual Course Planner 2020

Appendix 1

Course List 2020	1	2	3	4	5	6	7	8	9	10	11	12	13	14	15	16	17	18	19	20	21	22	23	24	25	26	27	28	29	30	31
January	BH			S	S						S	S						S	S					S	S						
February	S	S						S	S	STF				STF	S	S							S	S					S		
March	S	U	U	U				S	S	PNG	PNG	PNG	PNG	PNG	S	S						S	S	PCG	PCG	PCG			S	S	
April			MU	S	S					BH	S	S	BH					S	S	STF		MLA		STF	S	S		R	R		
May		S	S	BH					S	S			U	U		S	S	U	U	U			S	S	BH					S	S
June	FU	FU	FU	FU	FU	S	S	STF				STF	S	S		S	S				S	S						S	S		
July				S	S	U	U	U			S	S						S	S							S	S				
August	S	S	STF					STF	S	S						S	S	PE	PE	PE	PE	PE	S	S							BH
September					S	S	PNG	PNG	PNG	PNG	PNG	S	S					MU	S	S						S	S	IC	IC	IC	
October	IC	IC	S	S	IC	IC	IC	IC	IC	S	S	IC	IC	IC	IC	IC	S	S	IC	IC	IC	IC	IC	S	S	ST-A	ST1-A	ST1-A	ST1-A	ST1-A	S
November	S	ST1-A	ST1-A	ST1-A	ST1-A	ST1-A	S	S	ST1-B	ST1-B	ST1-B	ST1-B	ST1-B	S	S	ST1-B	ST1-B	ST1-B	ST1-B	ST1-B	ST1-B	S	S	U	U	U			S	S	
December		MLA	ST1-A	ST1-B	S	S	STF				STF	S	S		ST2-A	ST2-B			S	S					BH	S	S	BH			

Key		
Introductory Course	IC	Update
Follow-up Course	FU	Sample Taker Foundation
Pre-Exam Course	PE	MLA Course
Respiratory	R	ST1 course (A&B)
Serous Fluid	S	Medics / AP Update
Urine	U	Exam Dates
Pathologists-Non Gynae	PNG	Pathologists-Gynae
ST1 Tuition		ST2 Tuition

LRCTC Annual Course Planner 2019

Course List 2019	1	2	3	4	5	6	7	8	9	10	11	12	13	14	15	16	17	18	19	20	21	22	23	24	25	26	27	28	29	30	31	
January	BH				\$	\$						\$	\$		U	U	U		\$	\$	FU	FU	FU	FU	FU	\$	\$					
February		\$	\$	IC	IC	IC	IC	IC	\$	\$	IC	IC	IC	IC	IC	\$	\$	IC	IC	IC	IC	IC	\$	\$	IC	IC	IC	IC				
March	IC	\$	\$		PCG	PCG	PCG		\$	\$	PNG	PNG	PNG	PNG	PNG	\$	\$		U	U	U		\$	\$	STF				STF	\$	\$	
April					\$	\$	PE	PE	PE	PE	PE	\$	\$				MLA		BH	\$	\$	BH					\$	\$				
May				\$	\$	BH		\$	\$		\$	\$			U	U	U		\$	\$		MU			\$	\$	BH					
June	\$	\$						\$	\$	STF				STF	\$	\$			R	R		\$	\$						\$	\$		
July					\$	\$	FU	FU	FU	FU	FU	\$	\$			U	U	U		\$	\$			U	U		\$	\$				
August			\$	\$					\$	\$								\$	\$	PE	PE	PE	PE	PE	\$	\$	BH				\$	
September	\$						\$	\$	PNG	PNG	PNG	PNG	PNG	\$	\$			U	U	U		\$	\$	STF		NHS		STF	\$	\$	IC	
October	IC	IC	IC	IC	\$	\$	IC	NHS Exa	IC	IC	IC	\$	\$	IC	IC	IC	IC	IC	\$	\$	IC	IC	IC	IC	IC	\$	\$			MU		
November		\$	\$	ST1	ST1	ST1	ST1	ST1	\$	\$	ST1	ST1	ST1	ST1	ST1	\$	\$							\$	\$		U	U	U		\$	
December	\$			MLA			\$	\$	STF				STF	\$	\$								\$	\$		BH	BH			\$	\$	

Key	
Introductory Course	IC Update U
Follow-up Course	FU Sample Taker Foundation STF
Pre-Exam Course	PE MLA Course MLA
Respiratory	R SHO course ST1
Serous Fluid	S NHS Service Provider Group NHS
Urine	U Exam Dates NHS Exa
Medics / AP Update	MU
Pathologists-Non Gyna	PNG Pathologists-Gynae PCG

Course	Students			Evaluations				Cancelled
	London	Non-London	Total	Returned	Average Score	No > 4	No <4	
Pre-Exam Course 8-12 April 2019 CANCELLED	x	x	x	x	x	x	x	x
LBC Conversion Course 8 April 2019	1	0	1	1	5.0	1	0	0
MLA Course 17 April 2019 CANCELLED	x	x	x	x	x	x	x	x
Serous Fluid Course 8-9 May 2019	5	0	5	5	5.0	5	0	2
Update Course 14-16 May 2019	9	6	15	15	4.87	15	0	2
Medics Update 22 May 2019 CANCELLED	x	x	x	x	x	x	x	x
Sample Taker Initial Training 10 & 14 June 2019 CANCELLED	x	x	x	x	x	x	x	x
Respiratory Course 19-20 June 2019	4	4	8	8	5.0	8	0	1
Follow Up Course 8-12 July 2019 CANCELLED	x	x	x	x	x	x	x	x
Update Course 16-18 July 2019	7	2	9	9	4.86	9	0	1
Urine Course 24-25 July 2019	1	2	3	2	5.0	2	0	1
Pre-exam Course 19-23 August 2019	1	2	3	3	5.0	3	0	0
Pathologist Non-Gynae Course 9-13 September 2019	3	6	9	8	5.0	8	0	3
Update Course 17-19 September 2019	8	3	11	11	5.0	11	0	0
Sample Taker Initial Training 23 & 27 September 2019	18	0	18	16	4.75	16	0	5
Introductory Course Gynae Cytology 30 September-25 October 2019	0	2	2	2	5.0	2	0	3
Medics Update Course 1 November 2019	2	0	2	2	5.0	2	0	0
Sample taker Update (Primary HPV) 25 November 2019	18	0	18	9	5.0	9	0	3
ST1 Course 4-8 November 2019	11	0	11	11	5.0	11	0	0

Course	Students			Evaluations				Cancelled
	London	Non-London	Total	Returned	Average Score	No > 4	No <4	
ST1 Course 11-15 November 2019	11	0	11	11	5.0	11	0	0
Update Course 23-26 November 2019	5	4	9	6	5.0	6	0	4
MLA Course 4 December 2019 CANCELLED	x	x	x	x	x	x	x	x
Sample Taker Initial Training 9 & 13 December 2019	18	0	18	15	4.58	15	0	8
Update Course 2-4 March 2020 CANCELLED	x	x	x	x	x	x	x	x
Pathologist Non-Gynae Course 9-13 March 2020	8	7	15	14	4.87	14	0	2
Pathologist Gynae Course 23-25 March 2020 CANCELLED	x	x	x	x	x	x	x	x
TOTAL 2019 - 2020	130	38	168	148	4.94	148	0	35
TOTAL 2018 - 2019	162	79	241	200	4.88	197	0	29

London Regional Cytology Training Centre Commissioning Courses - Numbers for London Region Only 1 st April 2019 – 31 st March 2020				
Course Name	Number of planned courses per year	Actual number of courses	Course Length	London Students
Pre-registration Programmes				
(2-year NHS CSP Training in Cervical Cytology for non-medical trainees)				
Introductory Course in Gynaecological Cytology	1	1	20 days	0
Follow-up Course	1	0	5 days	x
Pre-Exam Course	2	1	5 days	1
Medical Laboratory Assistants (MLA) Introductory Course	2	0	1 day	x
Post-registration Programmes for qualified staff				
Update Courses for BMS / Cytoscreeners (Mandatory)	5	4	3 days	29
Pathologists Course: Non-gynaecological cytology	2	2	5 days	11
Pathologists Course: Gynaecological cytology	1	0	3 days	x
Medical Specialist Trainees Course (ST1)	2	2	5 days	22
Gynaecological Update for Consultants and Advanced Practitioners (Medics Update)	2	1	1 day	2
Non-gynaecological training for BMS staff (Serous Fluid, Respiratory and Urinary courses)	3	3	2 days	10
Cervical Sample Takers Initial Training Course	3	2	2 days	36
Cervical Sample Takers Update Training	Ad hoc	1	1 day	18
Bespoke LBC Training Course	Ad hoc	1	1 day	1
TOTAL				130

Of the 24 planned courses, 8 were cancelled due to lack of demand.

2 ad hoc courses were provided to meet individual training requirements

Additionally 15 training dates were added to the calendar to support the roll-out of Primary HPV testing, attended by more than 500 GPs and nurses.



Public Health
England



Protecting and improving the nation's health

NHS Cervical Screening Programme

Assessment scheme for the approval of UK
cytology training centres

CERTIFICATE OF APPROVAL

This site meets the national standards required of a
cytology training centre for staff working in the
NHS Cervical Screening Programme

Centre: London Regional Cytology Training Centre

Date of issue: 17th March, 2017

Endorsed by the Clinical Professional Group for
Cervical Screening Education & Training

This certificate is valid only if accompanied by a current annual notification of NHSCSP approval

Public Health England leads the NHS Screening Programmes

LRCTC 3 Month Rolling Retrospective and Prospective Pre-Reg Course Attendance April – July 2019 and Aug – Sept 2019

16						
15						
14						
13						
12						
11						
10						
9						
8						
7						
6						
5						
4						
3						
2						
1						
	Apr	May	June	July	Aug	Sept

	Pre-Exam Course CANCELLED 8 th -12 th April 2019		Follow-up Course CANCELLED 8 th – 12 th July 2019		Pre-Exam Course 19 th -23 rd August		LBC Conversion Course 9 th – 12 th April		This shows the number of students who are employed within the London Region
--	--	--	---	--	---	--	--	--	---

LRCTC 3 Month Rolling Retrospective and Prospective Pre-Reg Course Attendance Oct – Dec 2019 and Jan – Mar 2020

16						
15						
14						
13						
12						
11						
10						
9						
8						
7						
6						
5						
4						
3						
2						
1						
	Oct	Nov	Dec	Jan	Feb	Mar

	Introductory Course	30 th September – 25 th October 2019							This shows the number of students who are employed within the London Region
--	---------------------	--	--	--	--	--	--	--	---

LRCTC 3 Month Rolling Retrospective and Prospective Pre-Reg Course Attendance April – July 2020 and Aug – Sept 2020

16						
15						
14						
13						
12						
11						
10						
9						
8	Prospective 6 Months					
7						
6						
5						
4						
3			Follow-up Course			
2			Follow-up Course			
1			LBC Conversion Course			
	Apr	May	June	July	Aug	Sept

	LBC Conversion Course		Follow-up Course 1 st – 5 th June 2020		Pre-Exam Course Planned for 17 th -21 st August 2020		This shows the number of students who are employed within the London Region
--	-----------------------	--	---	--	---	--	---

